



WRPS | Summary of Options & Cost Estimates

Woodside Elementary School



RENOVATION

Reception

451 SF

- Add storefront with door from Vestibule into Reception
- Reconfigure Reception

Vestibule

250 SF

- Remove existing interior set of doors
- Patch floor / ceiling
- Install new interior set of doors for secure entrance
- Add (2) sets of doors for secondary vestibule

KEY



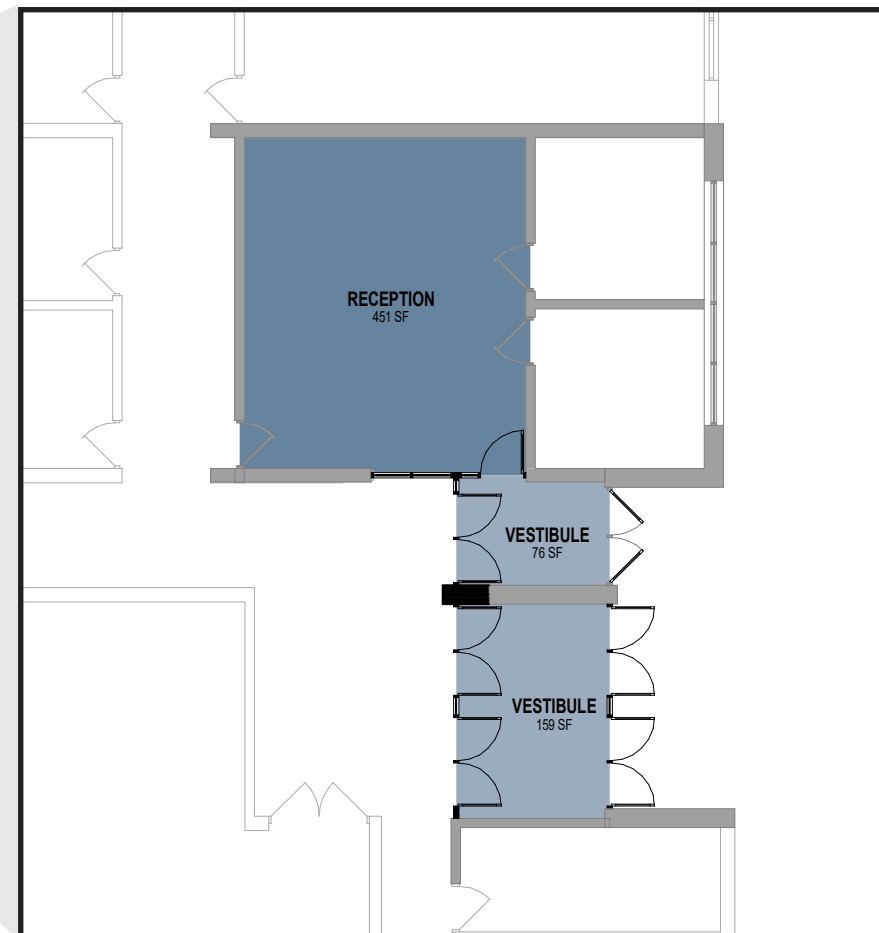
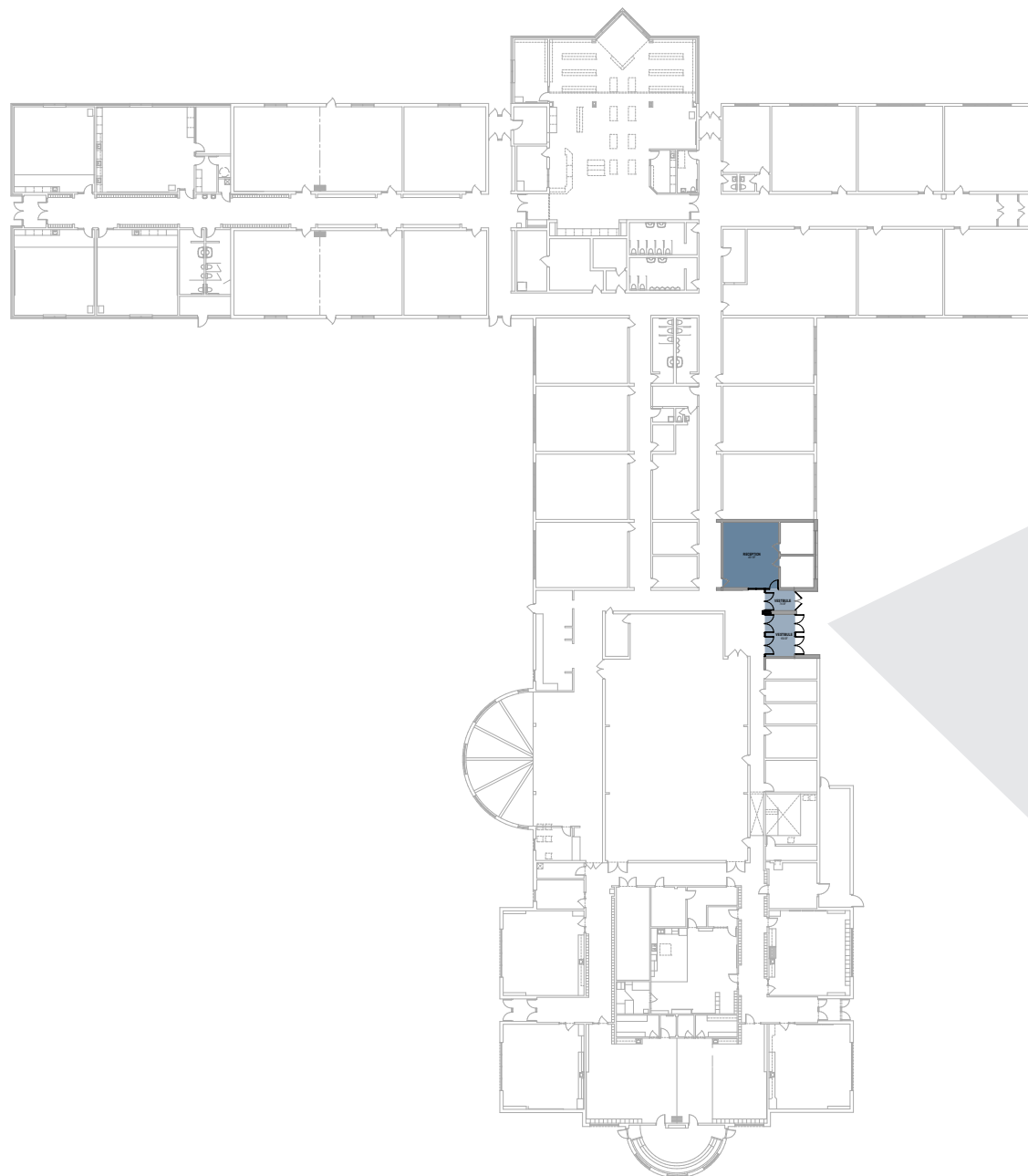
Addition



Renovation



NORTH



\$370,000