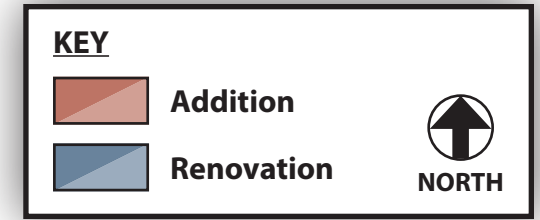
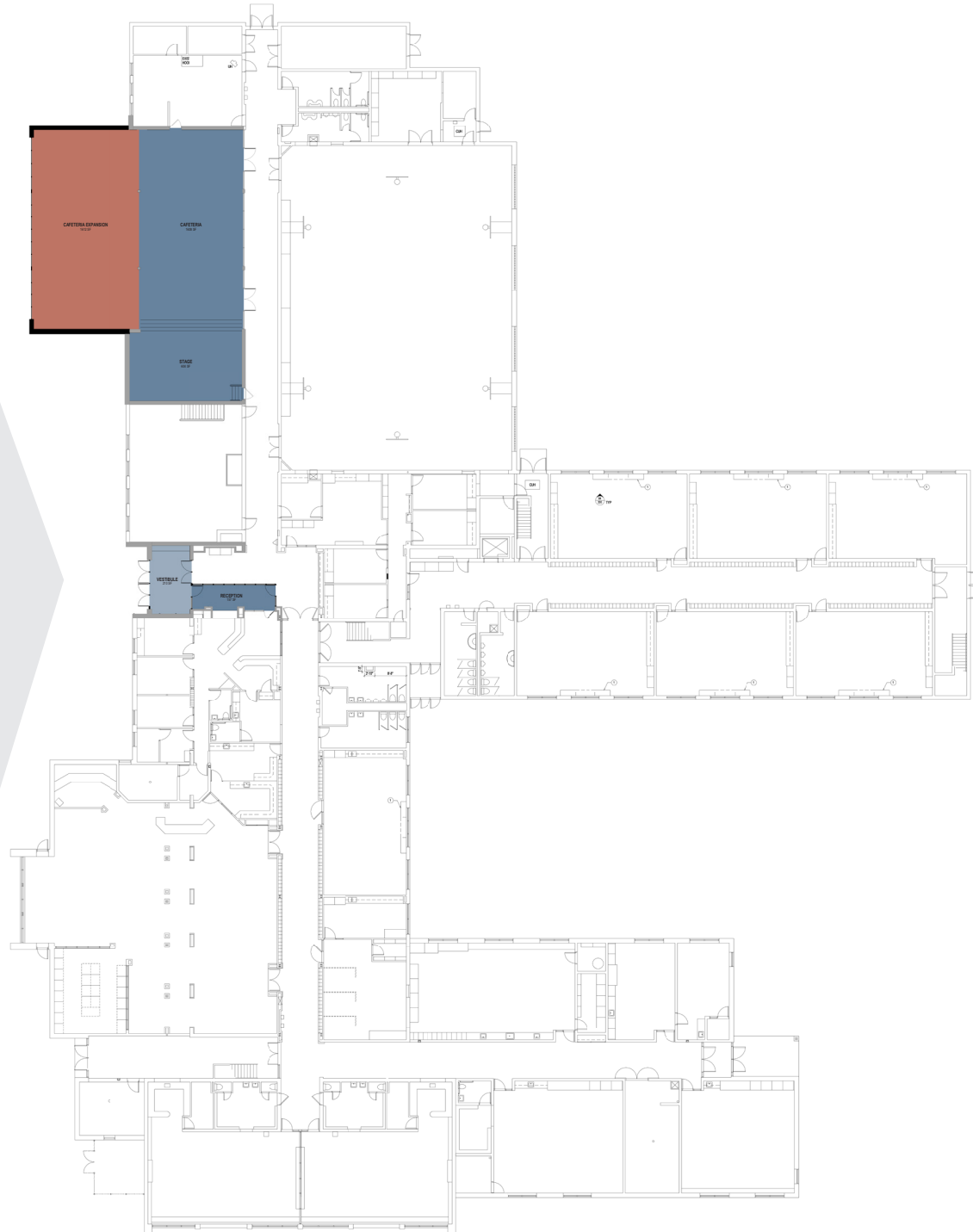




WRPS | Summary of Options & Cost Estimates

Mead Elementary School



RENOVATION

Reception	157 SF
• Add secondary Reception vestibule	
Vestibule	210 SF
• Remove existing vestibule doors	
• Install (2) new vestibule set of doors	
Cafeteria	1,608 SF
• Update finishes	
Stage	604 SF
• Update finishes	

ADDITION

Cafeteria	1,780 SF
• Expand Cafeteria	

\$1,660,000