

Howe School Mission Statement

We are a community of engaged learners, focused on academic and social growth, preparing for our changing world.

Paw Prints



Howe School Newsletter
221-8th Street North
Wisconsin Rapids, WI
54494
715-424-6772

Mrs. Miller, Principal

Fall 2023

Hello Howe Families,

October was a great month of learning and building strong classroom communities. We are almost through our first quarter of the school year. Your children make us laugh, smile, and enjoy our jobs. The Howe Staff all work hard to create the healthiest learning environment for your child. Howe was the showcase school at the October School Board Meeting. You can watch a recap via the WRPS.org website. We chose a focus of Active, Healthy, and Safe choices highlighting our many great physical activities offered in Physical Education, our wonderful food service for supporting the salad bar and Fresh Fruit and Vegetable Snack, our partnership with Playworks which brings evidence based practices for recess games and problem solving options. Ask your child about our recess Junior Coaches who are 4th and 5th graders available to help children resolve conflicts and play fun games where everyone has the option to be included.

Howe is a School Wide Title One School. That means that we qualify for additional resources to support student learning and parent engagement. We appreciate the many families who attended our Learn the Routine nights for each grade level. Our school goals are simple: Increase student success in literacy (reading and writing) and strengthen student relationships and connections. When a child feels connected to their school community their brains are more available for academic learning. This can look like daily morning meetings, sharing books about empathy and kindness, even having recess buddies so everyone feels included.

Pick up and drop off have been going well. If you are parking in the first row of the parking lot, be aware if the nose of your car is parked on the sidewalk. We have had a few instances where students had to get unnecessarily close to the road to walk around in front of cars.

Weather changes- I encourage students to dress in layers as we turn to the unpredictable fall weather patterns. Having a sweatshirt here at school or dressing in layers is a great strategy for children to have what they need during the day for indoor and outdoor activities. This also means that our Lost and Found area seems to grow this time of year. If your child is missing anything, encourage them to check out our Lost and Found that is in the lobby of Howe. Included in this newsletter is information about weather related school closing procedures and our winter weather clothing expectations.

As we are turning the calendar to November, you, your child, and our staff's safety and learning are my number one priority. We are a team, and I thank you for being our most important educational partner.

Have a great day!

Mrs. Miller



Upcoming Events

- November 10th**.....PTC Family Movie Night
November 13th – 20th.....Book Fair
November 14th.....Fundraiser Pick-Up 3:45-5:00 p.m.
November 16th.....Parent/Teacher Conferences (sign up through Skyward)
November 20th.....Parent/Teacher Conferences (sign up through Skyward)
November 22nd – 24th.....Thanksgiving Break, no school for students
December 1st.....Professional Development Day-no school for students
December 4th – 8th.....Holiday Shop
December 25th – January 1st....Winter Break



Attendance Line

If your child is going to be absent or tardy, please call the Howe School Attendance Line at 715-424-6772, ext. 1 before 8:30 a.m. Thank you.



Online Verification



Please complete the required online verification process if you haven't already done so. It is important that we have current contact information in case of an emergency, as well as health concerns, etc. If you need login information, contact the Howe School office at (715)424-6772, ext. 0.

Pick Up/Drop Off

If you are dropping your child off along 8th Street in front of the building, you need to stay in your car, and the child should be able to exit the vehicle on their own. Please park in the parking lot if you need to help your child leave the car. If you are utilizing the parking lot, please put down your cell phone and be aware of your surroundings. Remind your children to watch for vehicles and move to a sidewalk as soon as possible.

Volunteer Information

To ensure the safety of our students and staff, all volunteers must complete an online volunteer application and undergo a criminal history records check every three years. All volunteers must be approved prior to volunteering in any capacity. The deadline to apply is **January 31, 2024**. Please keep this date in mind if there is a possibility you may want to help with a future classroom field trip. A link to the online application is available on the district website, www.wrps.org. You may also go directly to the site at <https://bib.com/SECUREVOLUNTEER/WISCONSIN-RAPIDS-PUBLIC-SCHOOLS/>.



Title I

Parents with children in schools receiving Title I funding have the right to request information related to the qualifications of their child's teachers as part of the federal No Child Left Behind Act of 2001. Howe Elementary is a Title I school and parents may request information on teacher licensure, certification and degrees. All the professional staff at Howe Elementary meet the requirements of being highly qualified. If you have any questions, please contact Mrs. Miller.



Look for us on Facebook.

HOWE Elementary School
HOWE School PTC Wisc
Rapids

Stay connected!

Check out the Community Events area on the WRPS website for information and flyers about upcoming events! Go to www.wrps.org and click on the Community tab and Community Events/Flyers.

Safe Routes to School Survey

The Wisconsin Rapids Public Schools is partnering with the North Central Wisconsin Regional Planning Commission and the City of Wisconsin Rapids to review walking and biking conditions around each school – and hopefully plan to make them better.

We want to gather your thoughts about children walking and biking to school and have developed the Safe Routes to School (SRTS) survey for this purpose. The survey will take about 5 -10 minutes to complete, and it will be open through November 21, 2023 for you to provide feedback. We ask that each family complete only one survey per school that your children attend. If your family has more than one child at the same school, then please fill out the survey for the child with the next birthday from today's date.

Howe Elementary (Grades K-5)
Parent Survey

<https://www.surveymonkey.com/r/wr-howe>

Encuesta para padres

<https://www.surveymonkey.com/r/wr-howe?lang=es>

Niam Txiv Survey

<https://www.surveymonkey.com/r/wr-howe?lang=de>

Safe Routes To School programs are an opportunity to make walking and bicycling to school safer for children in grades K-8 and to increase the number of families who encourage their children to walk and bike. On a broader level, SRTS programs can enhance children's health and well-being, ease traffic congestion near the school, and improve community members' overall quality of life. You can learn more about SRTS by going to: <https://www.saferoutesinfo.org/> Thank you for taking the time to complete the SRTS survey!

Sledding Hill

Dear parents,

As in past years, we have the sledding hill as another option for a safe and fun outdoor winter activity. This notice serves as your permission for your child to participate in this activity. If you choose for your child not to participate in the recess sledding, please send a note to me requesting that they not participate in sledding. All students, regardless of your sledding preference, will still have outdoor recess with their class. Please send your child prepared for the snow and cold. Keep in mind, students will go out for recess everyday unless temperatures fall below zero. Please contact Mrs. Miller with any questions. Thank you!



Cold Weather Policy

This policy is based upon wind-chill factor and not actual degrees.

1. If the temperature and wind chill factor is above zero, there will be recess as usual.
2. If the temperature and/or wind chill factor is below zero, there will be no outdoor recess for anyone.

Students must wear appropriate winter clothing (mittens, gloves, boots, snowpants, caps, etc.) to be allowed to play outside during recess and the lunch break.



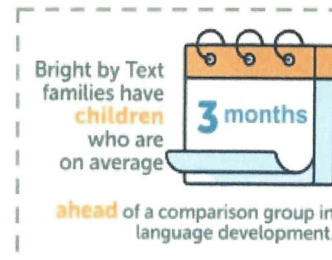
Bright by Text is a free program that sends tips and resources for healthy child development to parents' & caregivers' cell phones. Research based messages help parents and caregivers feel prepared, and local messages from United Way of South Wood & Adams Counties keep them informed. In fact, 92% of parents are more confident as a result of receiving messages from Bright by Text!

Each text message has a link to a landing page with information, including short modeling videos, related books, games, and other resources. Content comes from sources you can trust, including: Bright by Three, Cooking Matters, Delta Dental, PBS Parents, PBS Learning Media, Sesame Street, Vroom, and other partners like local libraries, museums, and health organizations.

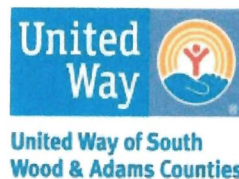
United Way is excited to help parents be more informed and engaged with Bright by Text. Sign up to receive Bright by Text messages by texting BADGER to 274448. For more information, reach out to Ben at United Way by calling 715-421-0390 or emailing ben@uwsvac.org.

What is **Bright by Text** ?

Bright by Text is a **free** program for parents & caregivers that sends tips and resources promoting child development, specific to each child's age, right to their cell phone.



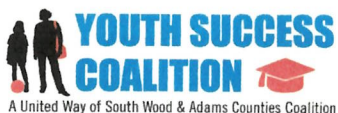
Feel more prepared & informed with research-based messages about healthy child development, and local messages with resources from United Way of South Wood & Adams Counties.



Empowering Youth: The Boys & Girls Club of the Wisconsin Rapids Area

Currently serving over 400 youth, Boys & Girls Club programs provide much needed after-school care, while helping youth develop character and build academic & life skills. Healthy lifestyles are learned through physical activity, healthy habits, and social emotional learning. The Second Step program teaches members how to identify, understand, and manage emotions. STEM activities ignite interest in science, technology, engineering, and mathematics, while creative arts projects encourage self-expression and artistic appreciation. Club members also get fun and unique opportunities to participate in programs like NBA Math Hoops which teaches math & social emotional skills through basketball over a 12-week program. Committed to all ages, the Teen Center offers programs like Career Launch for job-ready teens to learn important soft skills; and Teen Cuisine, for hands-on cooking instruction. Additionally, the Work Force program

allows teens to gain valuable job experience within the Club, and the Cougar Paths program in partnership with MSTC offers guided career exploration. To learn more, reach out to Member Service Director Cheyenne Kester at ckester@bgcwra.org or 715-818-5252.





**WISCONSIN RAPIDS
PUBLIC SCHOOLS**



**2023-2024 ADMINISTRATIVE POLICY STATEMENT
INCLEMENT WEATHER DAY PROCEDURES**

CANCELLATION

If bad weather during the night makes it impossible for buses to run in the morning, the following procedure will be used:

Announcements will be made using our Skylert system for parents, posts on the WRPS District webpage (www.wrps.org), the Nixle alert system, and also reported to these media outlets **as early as possible**, but in no case later than 6:30 a.m.:

- | | | | | |
|-----------------------|-----------------|------------------|-----------------|----------------------------|
| WGLX (103.3 FM) | WFHR (AM 1320) | WSPT (97.9 FM) | WAXX (104.5 FM) | WIFC (95.5 FM) |
| BIG CHEESE (107.9 FM) | WDLB (AM 1450) | WKQH (B 104.9FM) | WAYY (AM 790) | WDEZ (101.9 FM) |
| WYTE (106.5 FM) | WLJY (105.5 FM) | WPCN (AM 1010) | I-94 (94.1 FM) | WRIG (AM 1390) |
| HOT (96.7 FM) | WOSQ (92.3 FM) | WAOW-TV 9 | WSAW-TV 7 | WOZZ (94.7 FM) |
| | | | | WSAU (AM 550
or 99.9FM) |

EARLY DISMISSAL

If bad weather develops during the morning while school is in session, the following procedure will be used:

- ◆ Lunches will be served before the students are dismissed. (There is no lunch for 4K students.)
- ◆ Buses will run according to the following schedule:

Middle School	12:00 p.m.	
Assumption High School	12:10 p.m.	
Lincoln High School	12:20 p.m.	
River Cities High School (a.m. session)	11:00 a.m. (as usual)	** Afternoon RCHS sessions will be canceled.
Elementary Schools (Public & Parochial)	1:00 p.m.	** Afternoon early education unit sessions will be canceled.
Morning 4-Year Old Kindergarten Session	10:45 a.m.	** Afternoon 4K sessions will be canceled.

Announcements of the early dismissal will be made on the above listed stations by 10:00 a.m., advising parents that their children will be sent home early.

EXTRA-CURRICULAR ACTIVITIES/EVENTS

If an event or trip is canceled, it is the responsibility of the coach/advisor to inform the participants (the news stations listed above may be used for this communication). The safety of our students and staff is the primary consideration when making these decisions. While the "importance" of an event, the difficulties of rescheduling, and other inconveniences are recognized; safety is the only issue that is a factor in these decisions. Your cooperation, understanding, and assistance in these matters will be appreciated.

Questions regarding this Administrative Policy Statement should be referred to Superintendent Craig Broeren at 715-424-6701.

Craig Broeren
Superintendent



*LIKE our WRPS
Facebook account, or
follow us on Twitter to
get up-to-date weather
closure information!*

How does school get canceled due to weather?



WISCONSIN RAPIDS PUBLIC SCHOOLS



Parents may be interested to know how school closure decisions get made when inclement weather sweeps across our area. The number one priority in every closure decision is the safety of our students, and what is in the best interest of all students. When schools close, we lose valuable learning time with your child(ren), and many families have concerns or complications surrounding childcare. Furthermore, there may be times when parents feel differently about whether school should be open or closed based upon the weather. Should this happen, the District encourages parents to make a decision that they believe is best for their child's health and safety.

Decisions to close school are not taken lightly; and a great deal of thought and communication is involved in the process. Following are some details about what is involved in the weather-related school closure process, and how a final decision gets made:

As the Superintendent of Schools, I monitor weather conditions relative to snow/ice precipitation and gather input and feedback from all appropriate sources including meteorologists, transportation providers, and area highway personnel and/or law enforcement agencies that have personnel out driving on our roadways. Additionally, in cases of extremely cold temperatures and/or wind chills, a decision to close generally comes into play when temperatures will continue to remain around 35 degrees below zero or lower.

I will make every attempt to make a school closure decision as early as possible, and in no case later than 6:30 a.m. of the morning when school is to be in session. When feasible, decisions are made on the evening prior to the school day so that parents can make the appropriate arrangements necessary for childcare, if needed. Unfortunately, this early decision is not always possible given the unique weather patterns of Wisconsin.

You can find out about school closure decisions in a variety of ways:

- ⇒ Through email, text, and phone alerts generated by our Skylert notification system – you can sign up for these alerts through your "Family Access" account
- ⇒ By liking the District Facebook page, you will see inclement weather-related posts

from WRPS come up in your newsfeed (facebook.com/wrpsdistrict)

- ⇒ By going to our www.wrps.org webpage – weather closure alerts get posted at the top of the main District page, once a decision has been made
- ⇒ You can sign up for community related alerts through Nixle and receive a variety of school district, law enforcement, and other notifications for our area which you may find of interest
- ⇒ By listening to local radio and television news stations

Note that when school gets canceled, all other activities scheduled in school buildings for that day are also canceled. As outlined in Board Policy 723.1, ***it is possible that certain dates will be designated as Remote Learning Days*** – your school will individually communicate more about expectations for students on these dates when they occur.

Once school begins for the day, schools generally will not dismiss early unless absolutely necessary in order to avoid complications with transportation and childcare arrangements. Again, the safety of our students is always at the forefront of the decision-making process.

A decision to close during the school day will occur by 10:00 a.m., and lunches will be served to students in grades KG-12 before they are dismissed. **Middle school students will be dismissed first at 12:00 p.m., followed by Lincoln High students at 12:20 p.m.; and the elementary students will dismiss last at 1:00 p.m.** Afternoon sessions for our 4K and River Cities High School programs are automatically canceled if we close early. Communication to parents about an early release is similar – via Skylert, our District webpage and social media pages, Nixle, and various local media outlets.

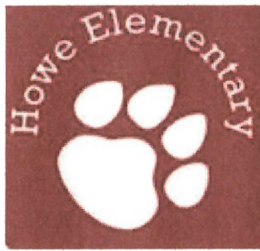
School closure decisions are not always popular, and I can appreciate that parents may have different opinions about whether or not school should be canceled. Again, we always leave the final decision up to parents about whether to keep their child(ren) home if they feel this is best for their circumstance.

We sincerely appreciate your understanding and support when school closure decisions become necessary on inclement weather days. The decisions are not always easy, but they are definitely made with the best interest of all students in mind.

If you have questions concerning this information, feel free to contact me.

A handwritten signature in black ink, appearing to read 'C. Broeren'.

Craig Broeren
Superintendent
craig.broeren@wrps.net
715-424-6701



HIGHLIGHTING CULTURAL DIVERSITY

At Howe School, we believe that embracing cultural diversity is not only essential for building a harmonious community but also for preparing our students for a globalized world. We are committed to creating a school environment that reflects the rich tapestry of cultures present in our community and beyond. To achieve this goal, we are implementing an exciting initiative.

What Does Heritage Mean?

Our unique and unbreakable bond to our roots. Our Heritage identifies who we are and where our origins lie.

Cultural Heritage Months:

Each month, we will highlight a specific culture or heritage group, showcasing their contributions to our society. Students will have the opportunity to learn about the traditions, customs, and history of these cultures through classroom activities and presentations.

HOW CAN YOU BE INVOLVED?

- Share your family's cultural traditions or stories with your child.
- Volunteer to help with the planning and execution of different activities throughout the year.
- Support your child's learning by exploring books and resources related to different cultures at home.

We are excited about the positive impact this initiative will have on our school community. By highlighting cultural diversity, we aim to foster an inclusive environment where all students feel valued and respected.

Thank you for your continued support and partnership in your child's education journey. If you have any questions or would like to contribute to our efforts, please do not hesitate to reach out to us. We would love to hear from you!

Together, we can make Howe School a place where cultural diversity is not only celebrated but also embraced as a source of strength and enrichment.

- September into October- Hispanic Heritage Month
- October- Loves Makes a Family
- November- Indigenous Peoples Month
- December- Holidays Around the World
- January- Lunar New Year - Map of our World- What is my family heritage?
- February- Black History Month
- March- Women's History Month
- April- HMong Heritage Month
- May- Asian Pacific American Heritage Month / Jewish History Month



DESTACANDO LA DIVERSIDAD CULTURAL

En la escuela Howe, creemos que aceptar la diversidad cultural no solo es esencial para construir una comunidad armoniosa sino también para preparar a nuestros estudiantes para un mundo globalizado. Estamos comprometidos a crear un ambiente escolar que refleje el rico tapiz de las culturas presentes en nuestra comunidad y más allá. Para lograr este objetivo, estamos implementando una iniciativa emocionante.

¿Qué Significa Herencia?

Nuestro vínculo único e inquebrantable con nuestras raíces. Nuestra herencia identifica quiénes somos y dónde se encuentran nuestros orígenes.

Meses de la Herencia Cultural:

Cada mes, destacaremos un grupo específico de cultura o herencia, mostrando sus contribuciones a nuestra sociedad. Los estudiantes tendrán la oportunidad de aprender sobre las tradiciones, las costumbres e historia de estas culturas a través de actividades y presentaciones en el aula.

¿CÓMO PUEDO PARTICIPAR?

- Comparta las tradiciones culturales o historias de su familia con su hijo.
- Ofrecerse como voluntario para ayudar con la planificación y ejecución de diferentes actividades a lo largo del año.
- Apoye el aprendizaje de su hijo(a) explorando libros y recursos relacionados con diferentes culturas en casa.

Estamos emocionados con el impacto positivo que esta iniciativa tendrá en nuestra comunidad escolar. Destacando la diversidad cultural, respaldamos un entorno inclusivo donde todos los estudiantes se sientan valorados y respetados.

Gracias por su continuo apoyo y colaboración en el viaje educativo de su hijo(a). Si tiene alguna pregunta o desea contribuir a nuestros esfuerzos, por favor no dude en ponerse en contacto con nosotros. ¡Nos encantaría saber de usted!

Juntos, podemos hacer la escuela Howe un lugar donde la diversidad cultural no solo se celebre sino que también se acepte como una fuente de fortaleza y enriquecimiento.

- De septiembre a octubre- Mes de la Herencia Hispana
- Octubre- El amor Hace una Familia
- Noviembre- Mes de la Gente Indígena
- Diciembre- Días Festivos Alrededor del Mundo
- Enero- Año Nuevo Lunar - Mapa de nuestro Mundo- ¿Cuál es mi herencia familiar?
- Febrero- Mes de la Historia Afroamericana
- Marzo- Mes de la Historia de la Mujer
- Abril- Mes de la Herencia HMong
- Mayo- Mes de la Herencia Asiática del Pacífico Americana / Mes de la Historia Judía



Howe Winter Weather Expectations

We believe it is vital for students to get fresh air and exercise daily. We have updated our winter weather expectations for students to stay safe and warm. Please contact Mrs. Miller (Howe Principal) with any comments or questions.

1. Students must have coats, hats, gloves, snow pants, and boots to play in the snow.
2. Students who do not have all of the items listed above will be playing on the blacktop only. Those without boots may need to stay by the door/wall, depending on the condition of the blacktop area.
3. Please send your child with appropriate outerwear for the weather. We expect that the outerwear that is sent with them to school is to be worn at recess.
4. If they are wearing boots to school, please send shoes along with them. Feet get very hot throughout the day if boots are the only option. Calls will be made home for students who forget their shoes.
5. Wet snow may sometimes cause wet clothes. A helpful practice some parents use is to send an extra set of clothes with their child to keep in their locker. This way, they will have their items easily accessible.
6. Schools can keep children indoors if the wind chill is between 0 and -10 or lower. The recess decision will be communicated daily with classroom teachers depending on the weather during the noon hour.

Thank you for supporting your child and their ability to enjoy our wonderful Wisconsin winter. Please contact Mrs. Ehleiter (School Social Worker) if you need help getting any of the items listed above.

Thank you!

Mrs. Miller