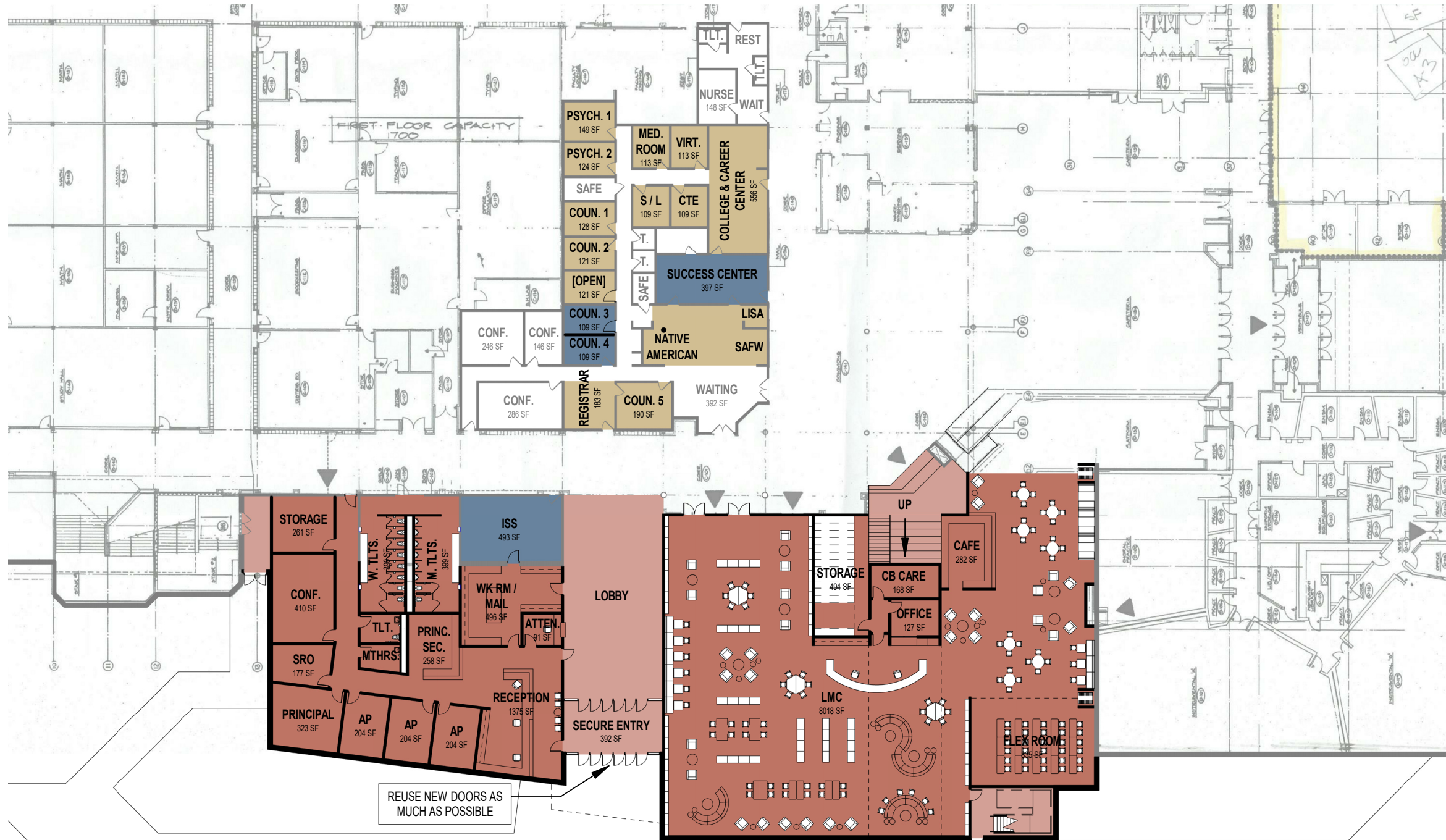




WRPS | Summary of Options & Cost Estimates

Lincoln High School



KEY

- Addition
- Renovation
- Reassignment

NORTH

\$13,065,000



WRPS | Summary of Options & Cost Estimates

Lincoln High School



KEY

- Addition
- Renovation
- Reassignment

NORTH

\$9,930,000



WRPS | Summary of Options & Cost Estimates

River Cities High School



KEY

- Addition
- Renovation
- Reassignment

NORTH

RENOVATION

Reception

270 SF

- Add storefront with door from Vestibule into Reception
- Add door from Reception to rest of school
- Reconfigure Reception

Vestibule

282 SF

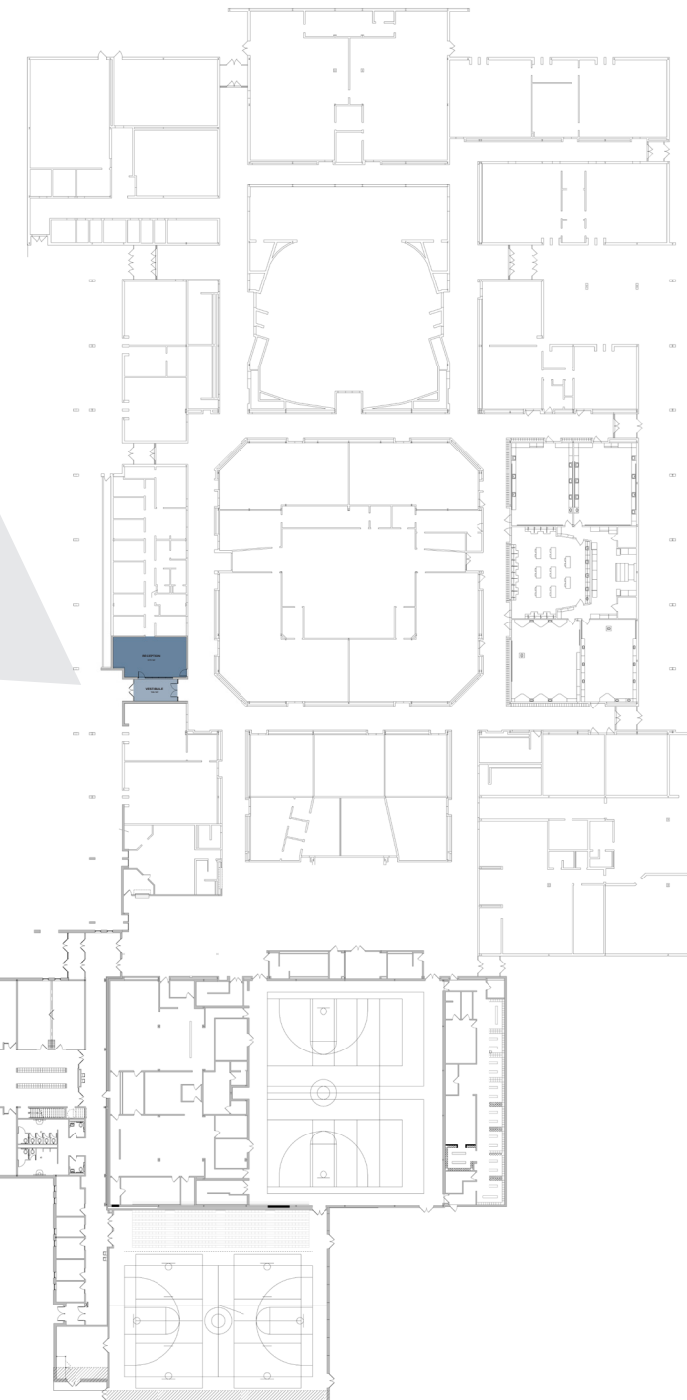
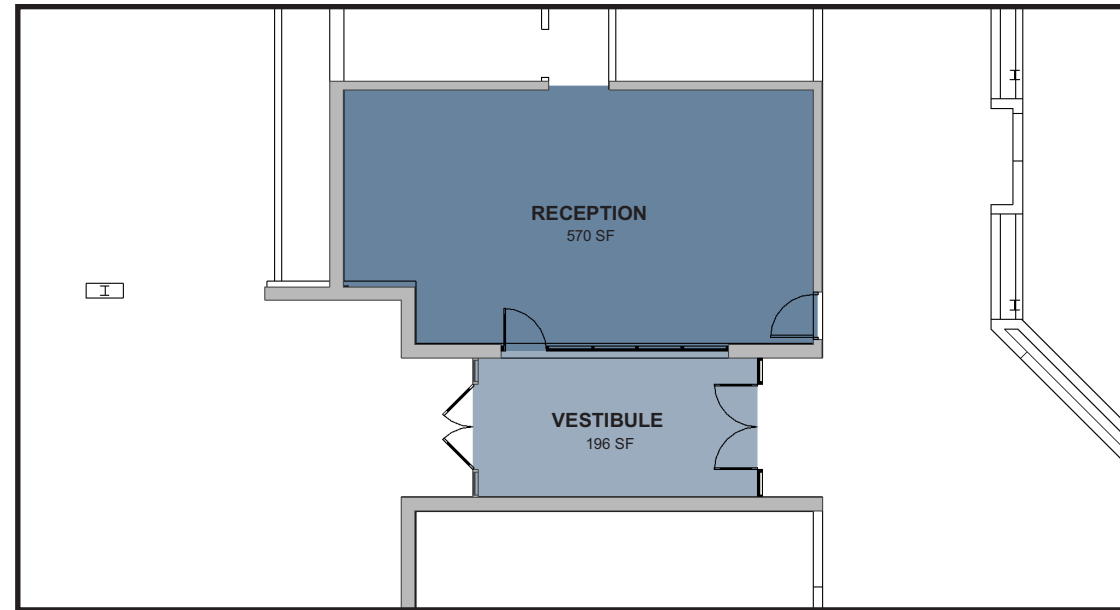
- Remove existing interior set of doors
- Patch floor / ceiling
- Install new interior set of doors

\$85,000






WRPS | Summary of Options & Cost Estimates

Wisconsin Rapids Area Middle School



KEY

-  Addition
-  Renovation

 NORTH

RENOVATION

Reception

- Add storefront with door from Vestibule into Reception
- Add door from Reception to rest of school
- Reconfigure Reception

Vestibule

- Remove existing interior set of doors
- Patch floor / ceiling
- Install new interior set of doors

570 SF

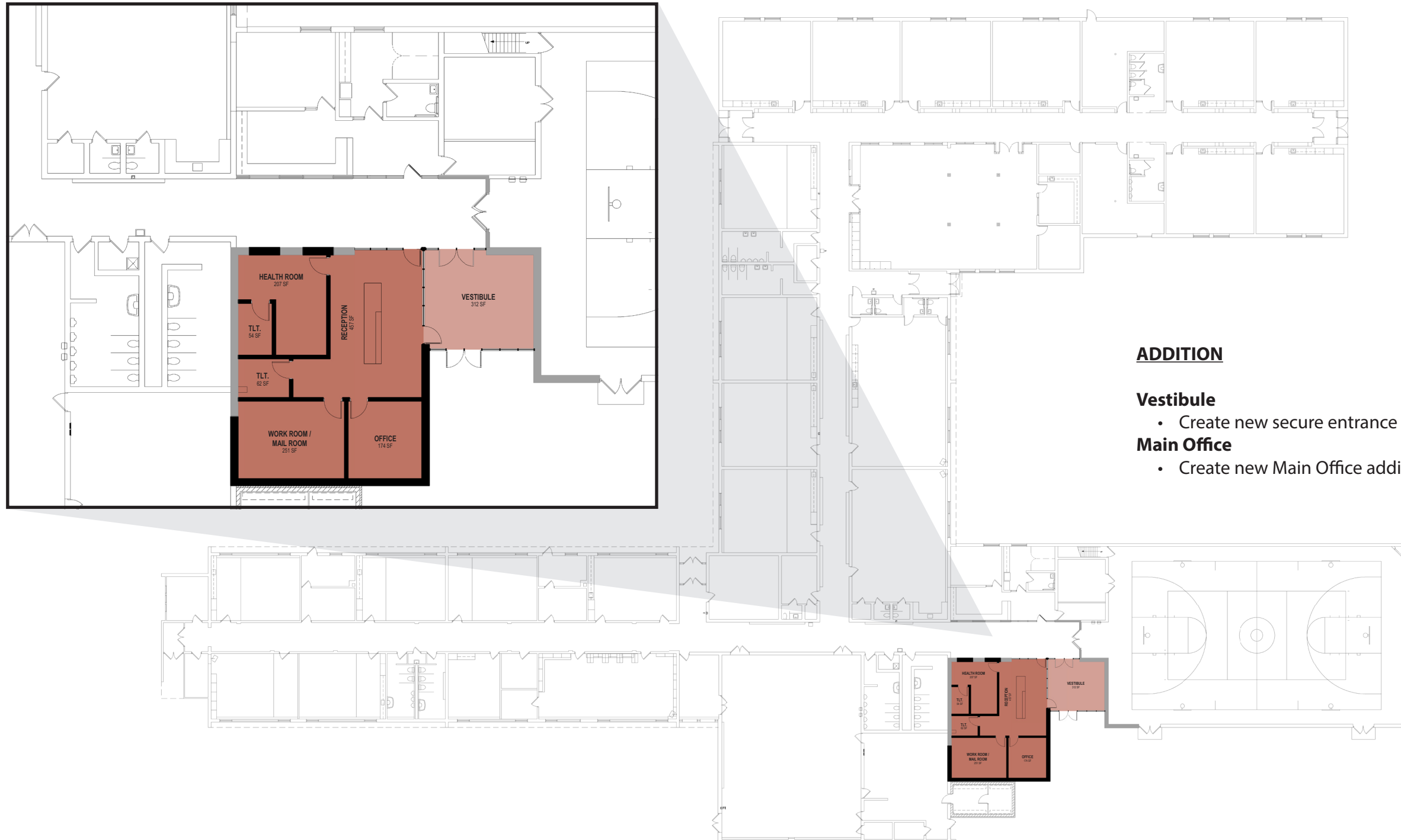
196 SF

\$290,000






WRPS | Summary of Options & Cost Estimates

Grant Elementary School



KEY

-  Addition
-  Renovation


NORTH

ADDITION

Vestibule

- Create new secure entrance vestibule

330 SF

Main Office

- Create new Main Office addition

1,455 SF

\$1,270,000



WRPS | Summary of Options & Cost Estimates

Grove Elementary School



RENOVATION

Reception

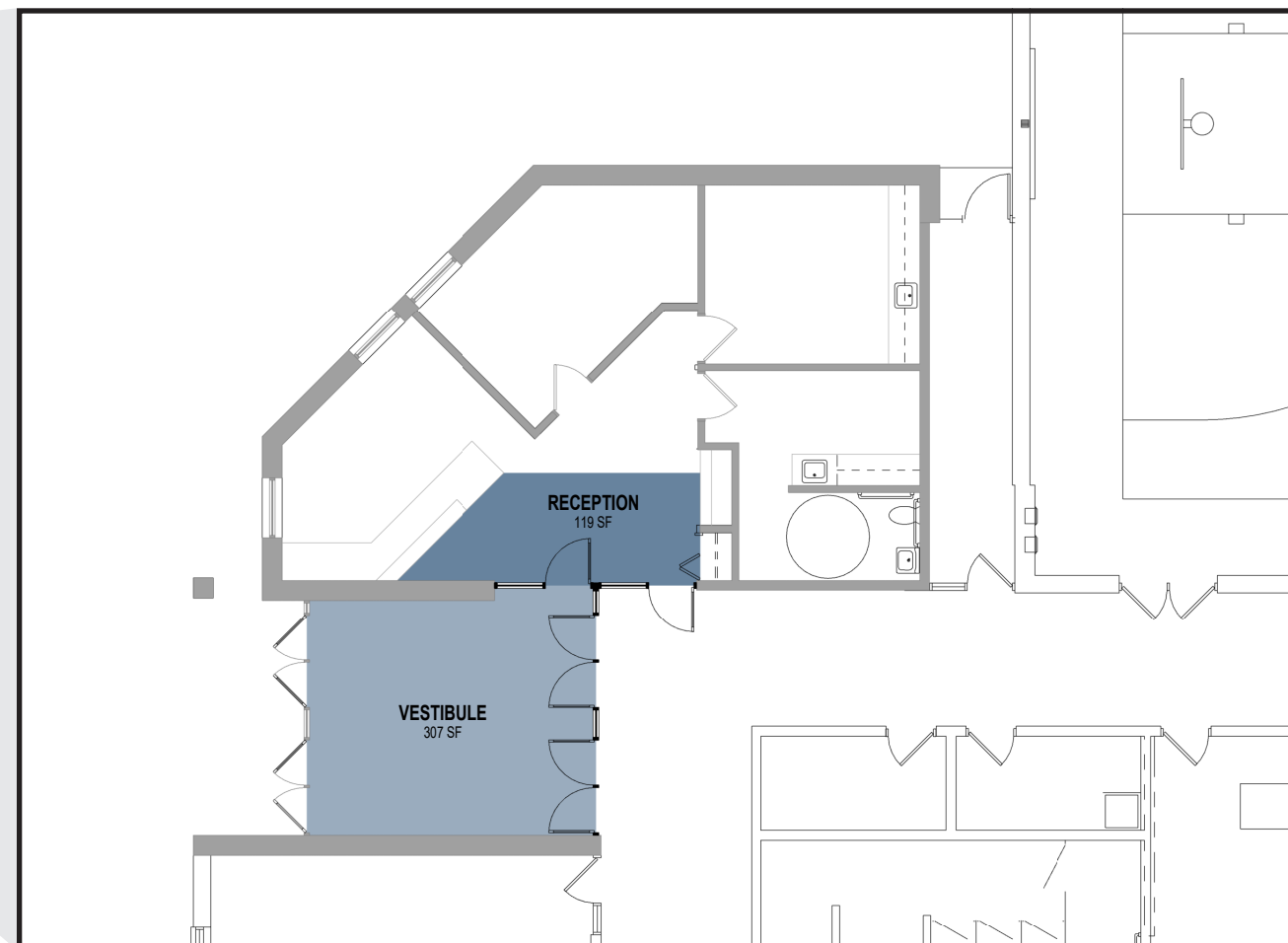
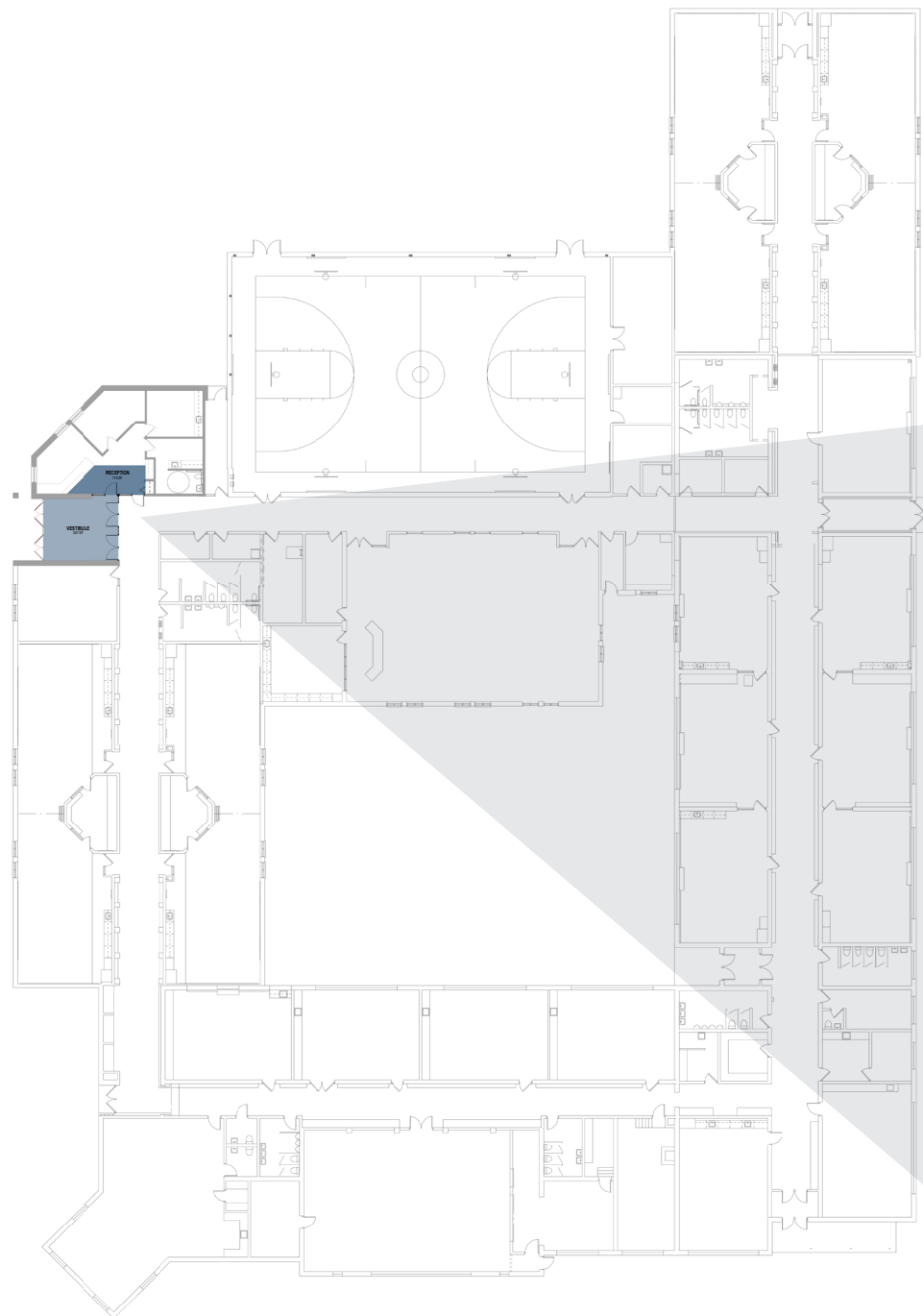
119 SF

- Add storefront with door from Vestibule into Reception
- Add door from Reception to rest of school



Vestibule


307 SF

- Remove existing interior set of doors
- Patch floor / ceiling
- Install new interior set of doors



KEY

-  Addition
-  Renovation

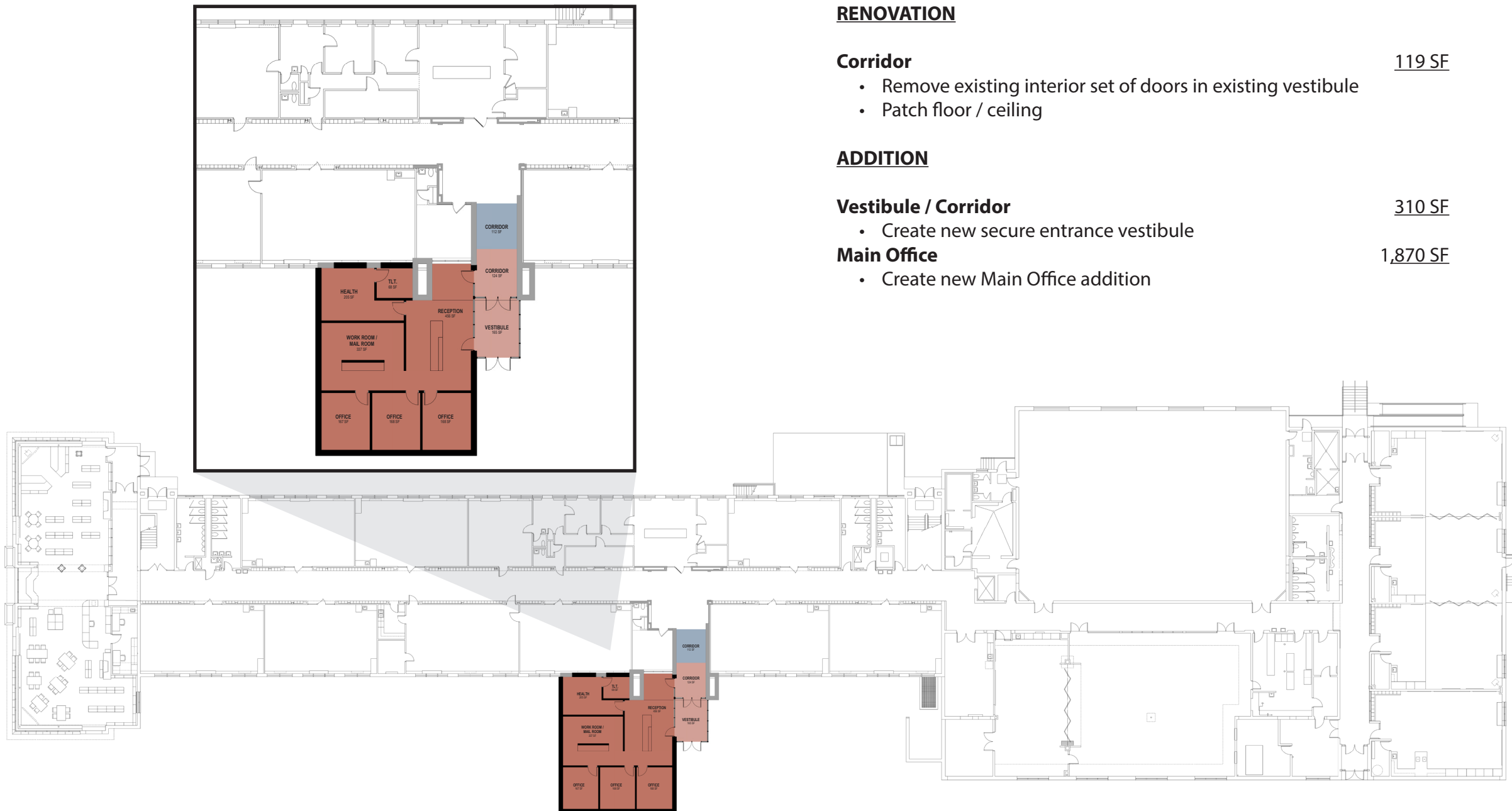
 NORTH

\$140,000



WRPS | Summary of Options & Cost Estimates

Howe Elementary School



RENOVATION

Corridor

119 SF

- Remove existing interior set of doors in existing vestibule
- Patch floor / ceiling

ADDITION

Vestibule / Corridor

310 SF

- Create new secure entrance vestibule

Main Office

1,870 SF

- Create new Main Office addition

KEY



Addition



Renovation



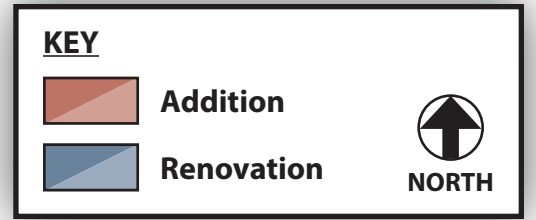
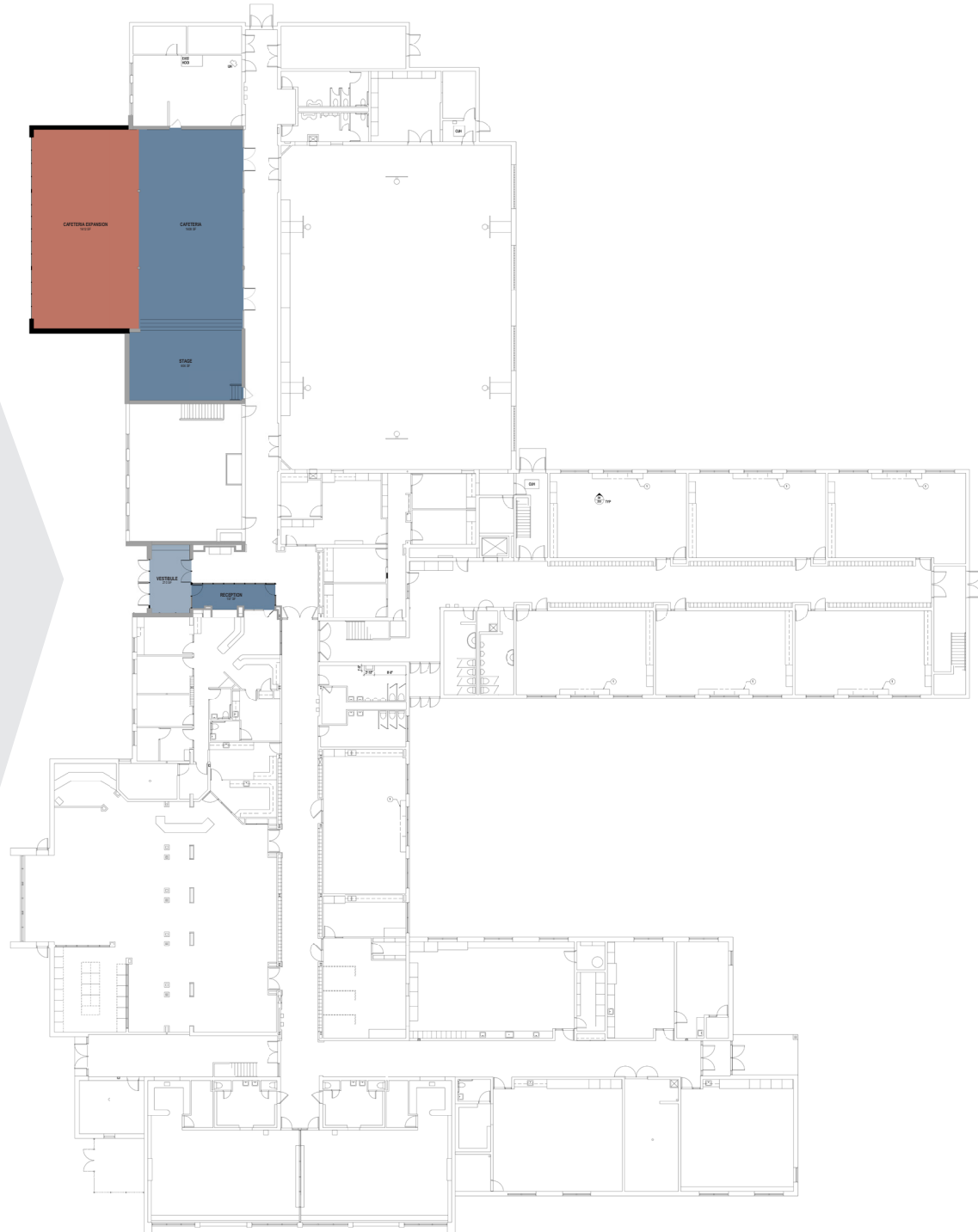
NORTH

\$1,380,000



WRPS | Summary of Options & Cost Estimates

Mead Elementary School



RENOVATION

Reception	157 SF
• Add secondary Reception vestibule	
Vestibule	210 SF
• Remove existing vestibule doors	
• Install (2) new vestibule set of doors	
Cafeteria	1,608 SF
• Update finishes	
Stage	604 SF
• Update finishes	

ADDITION

Cafeteria	1,780 SF
• Expand Cafeteria	

\$1,660,000



WRPS | Summary of Options & Cost Estimates

THINK Academy



RENOVATION

Reception 339 SF

- Add storefront with door from Vestibule into Reception
- Reconfigure door from Reception to rest of school

Vestibule 201 SF

- Remove existing interior set of doors
- Patch floor / ceiling
- Install new interior set of doors

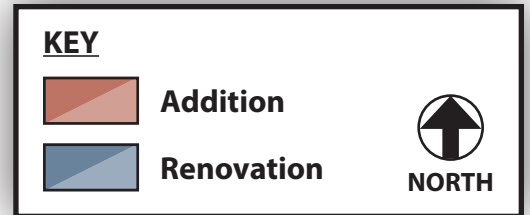
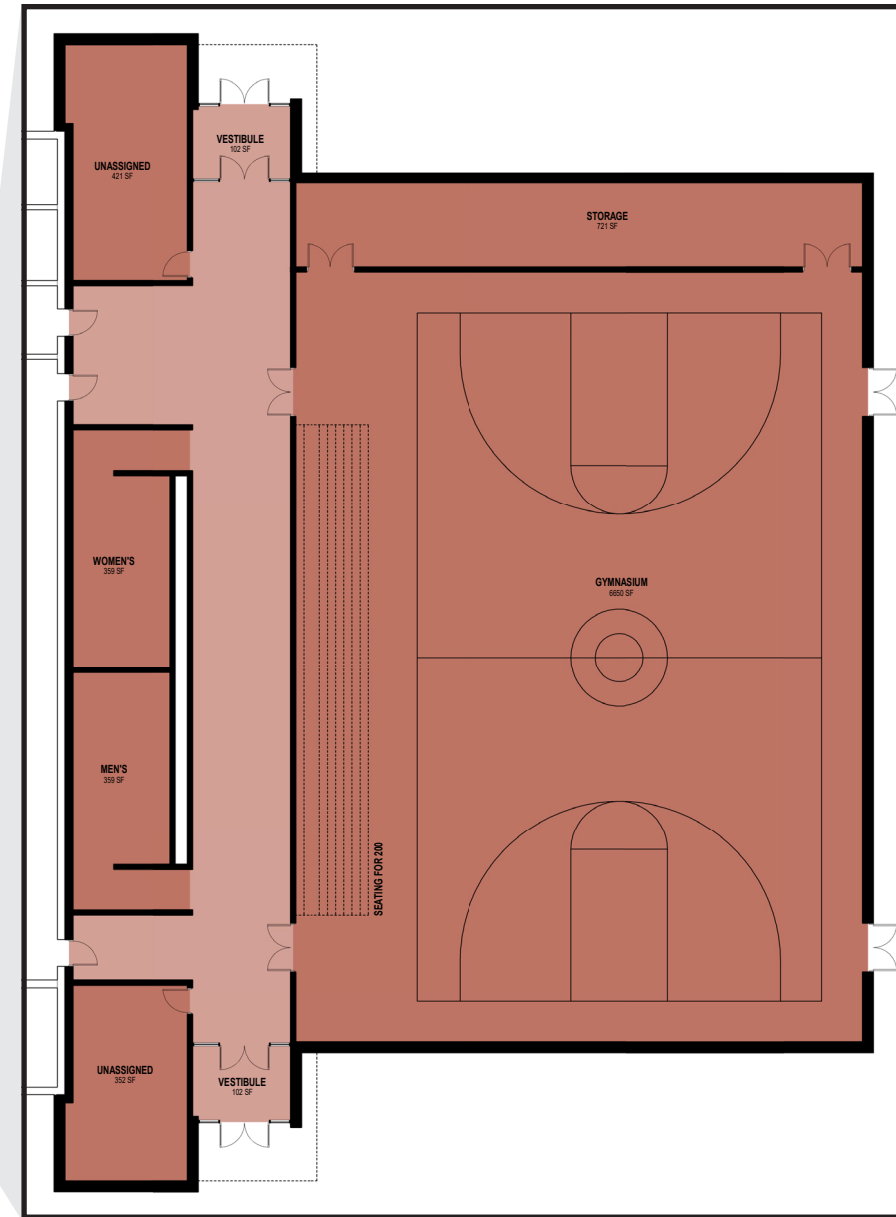
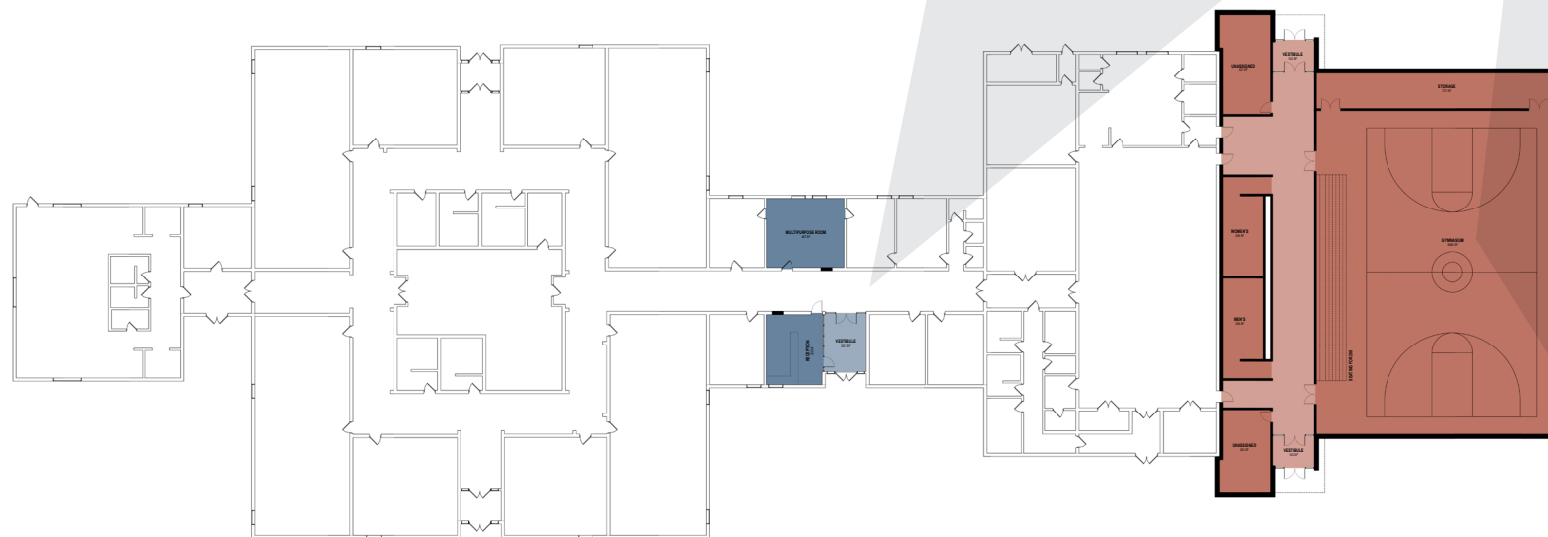
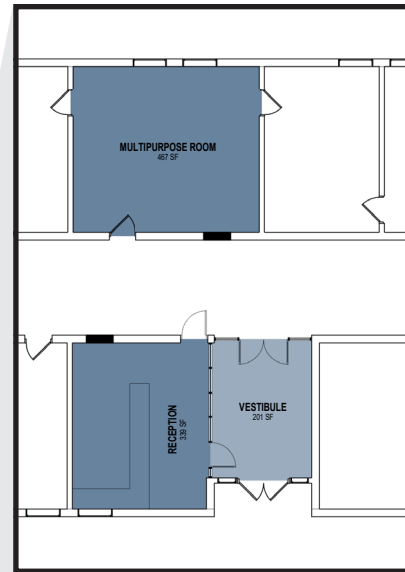
Multipurpose Room 467 SF

- Remove walls of existing Main Office to create Multipurpose Room

ADDITION

Gymnasium 11,655 SF

- Create new gymnasium addition; including ancillary spaces

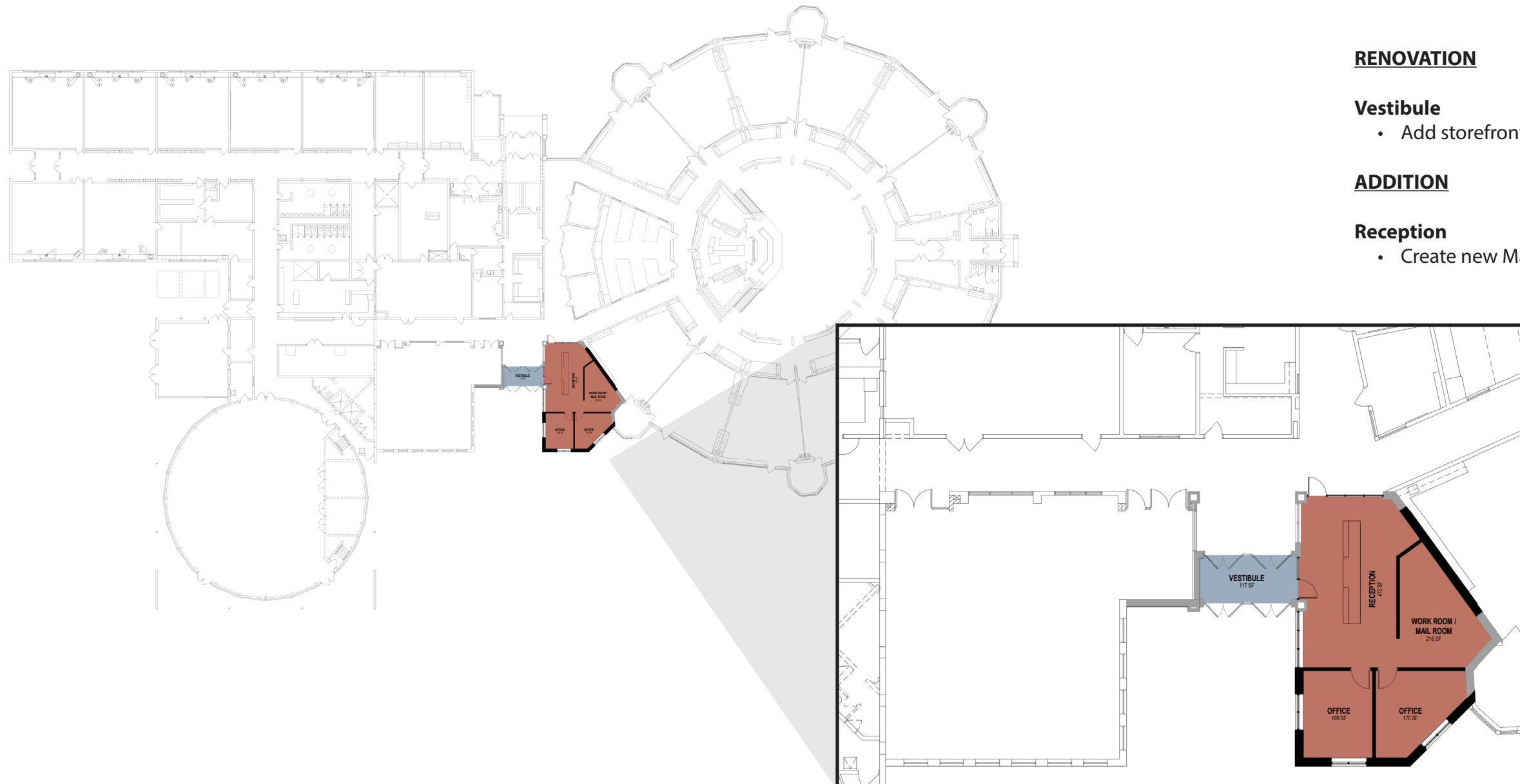


\$4,770,000



WRPS | Summary of Options & Cost Estimates

Washington Elementary School



KEY

- Addition
- Renovation

NORTH

RENOVATION

Vestibule 117 SF
• Add storefront with door from Vestibule into Reception

ADDITION

Reception 1,220 SF
• Create new Main Office addition

\$1,040,000



WRPS | Summary of Options & Cost Estimates

Woodside Elementary School



RENOVATION

Reception

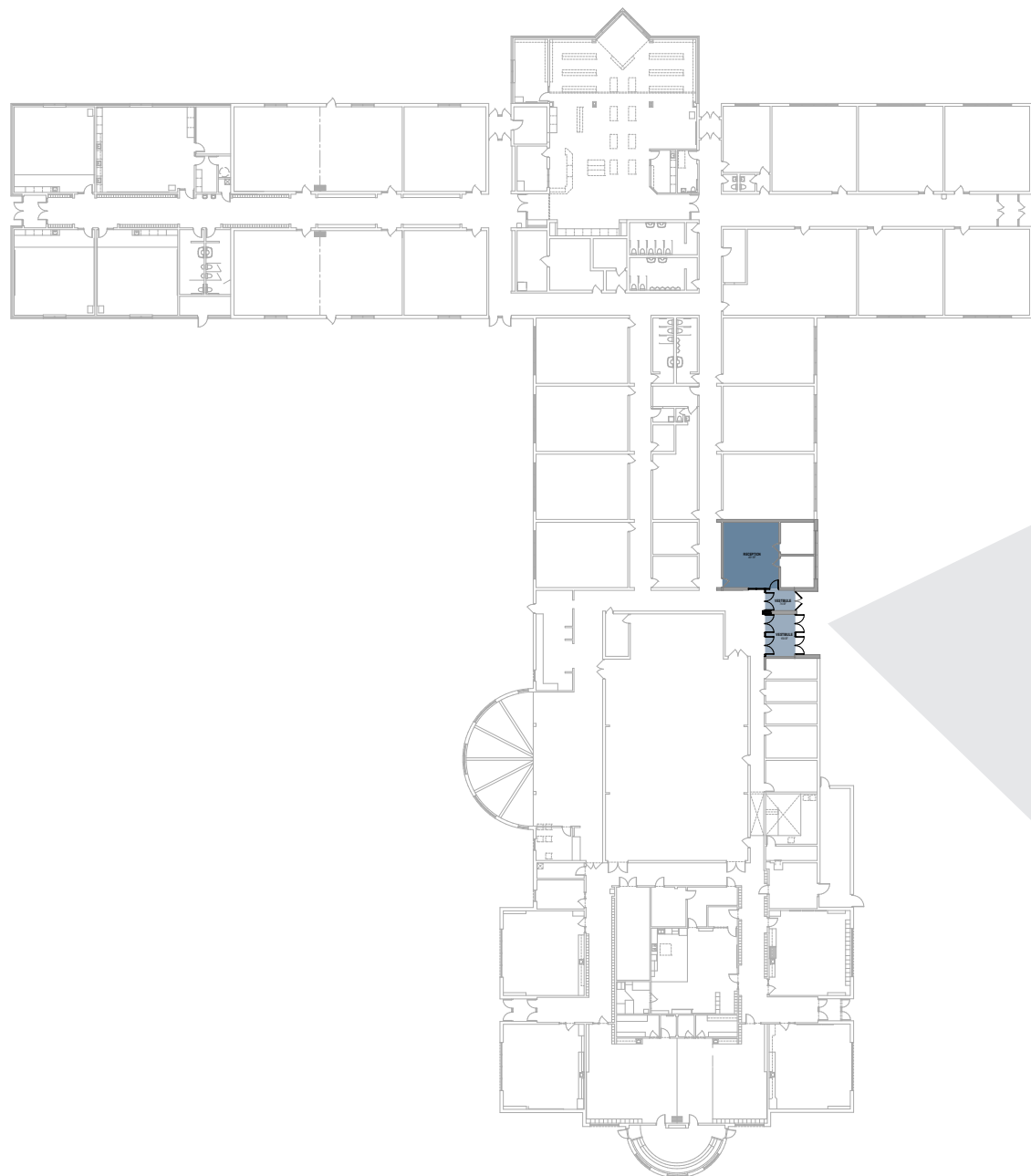
451 SF

- Add storefront with door from Vestibule into Reception
- Reconfigure Reception



Vestibule


250 SF

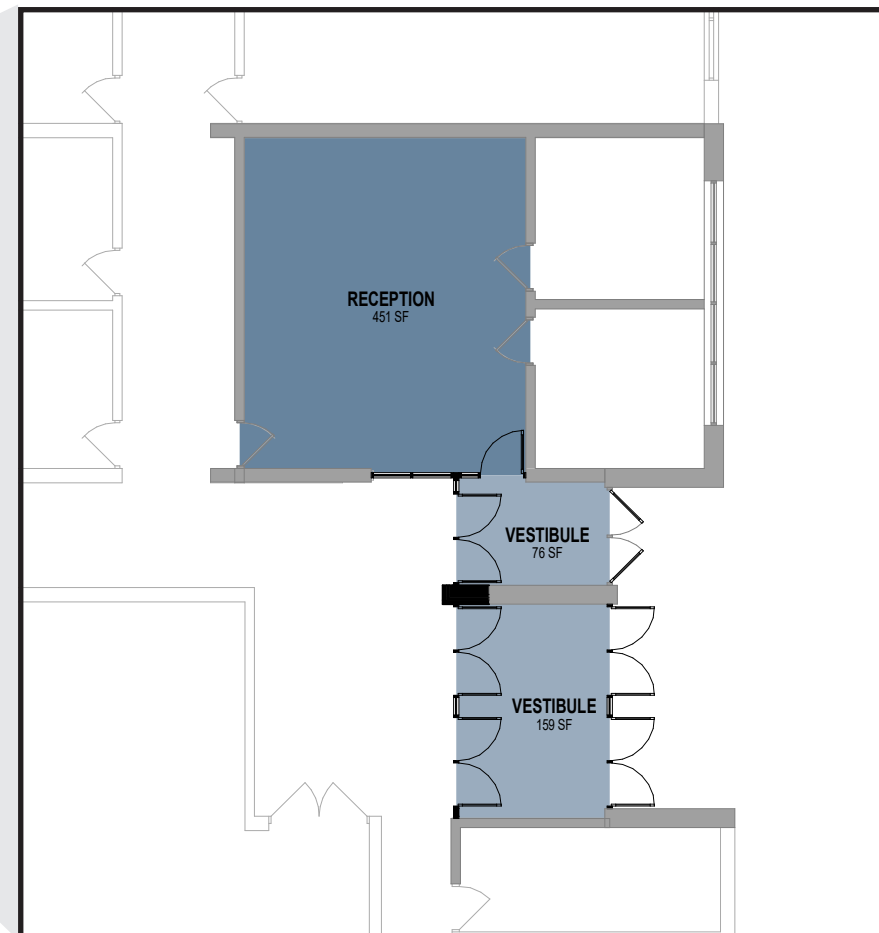
- Remove existing interior set of doors
- Patch floor / ceiling
- Install new interior set of doors for secure entrance
- Add (2) sets of doors for secondary vestibule



KEY

-  Addition
-  Renovation

 NORTH



\$370,000